

ORDINANCE NO. 2666

AN ORDINANCE adopting revisions to the Comprehensive Land Use Map of the City of Camas and to the Zoning Map of the City of Camas.

WHEREAS, the City of Camas has heretofore adopted a Comprehensive Plan and Comprehensive Land Use Map as required by the provisions of RCW 36.70A, Revised Code of Washington, the Growth Management Act, and

WHEREAS, under Chapter 36.70A, Revised Code of Washington, the City is required annually to consider amendments to the land use element of the Comprehensive Plan and associated rezones, and

WHEREAS, the Planning Commission has conducted a public hearing on the requests for revisions submitted to the City, and has forwarded its recommendation to the City Council, and

WHEREAS, the City Council has conducted a public hearing on the requests for revisions,

NOW, THEREFORE, THE COUNCIL OF THE CITY OF CAMAS DO ORDAIN AS FOLLOWS:

Section I

The proposal includes changing the Comprehensive Land Use Map and Zoning Map to include park designations, which are currently designated as Single-family lands (generally). The proposed park designations are consistent with the City of Camas Comprehensive Plan (Table 4) page IV-2, which includes park and green space designations. The City Council hereby adopts the recommendation of the Planning Commission, and directs the Community Development Director to amend the Comprehensive Land Use Map to designate city park lands as either “Park” or “Open space/Green space”. The Community Development Director is further directed to amend the Zoning Map of the City of Camas to designate city park lands as Neighborhood Park (NP), Special Use (SU) or Open Space (OS).

Section II

A request from property owners proposed to change the Comprehensive Plan and zoning designations for six parcels, located northwest of NE Ingle Road, with a combined 9.2 acres. The request is to amend the Comprehensive Plan and zoning from a current comprehensive plan designation of Commercial and associated zoning of Community Commercial (CC), to a

comprehensive plan designation of Single-Family Low with a concurrent zone change to R-20.

The City Council hereby adopts the recommendation of the Planning Commission, and directs the Community Development Director to amend the Comprehensive Land Use Map to designate the 9.2 acres as Single-Family Low. The Community Development Director is further directed to amend the Zoning Map of the City of Camas to designate the 9.2 acres as Residential 20,000 (R-20).

Section III

This ordinance shall take force and be in effect five (5) days from and after its publication according to law.

PASSED BY the Council and APPROVED by the Mayor this 17 day of December 2012.

SIGNED: _____

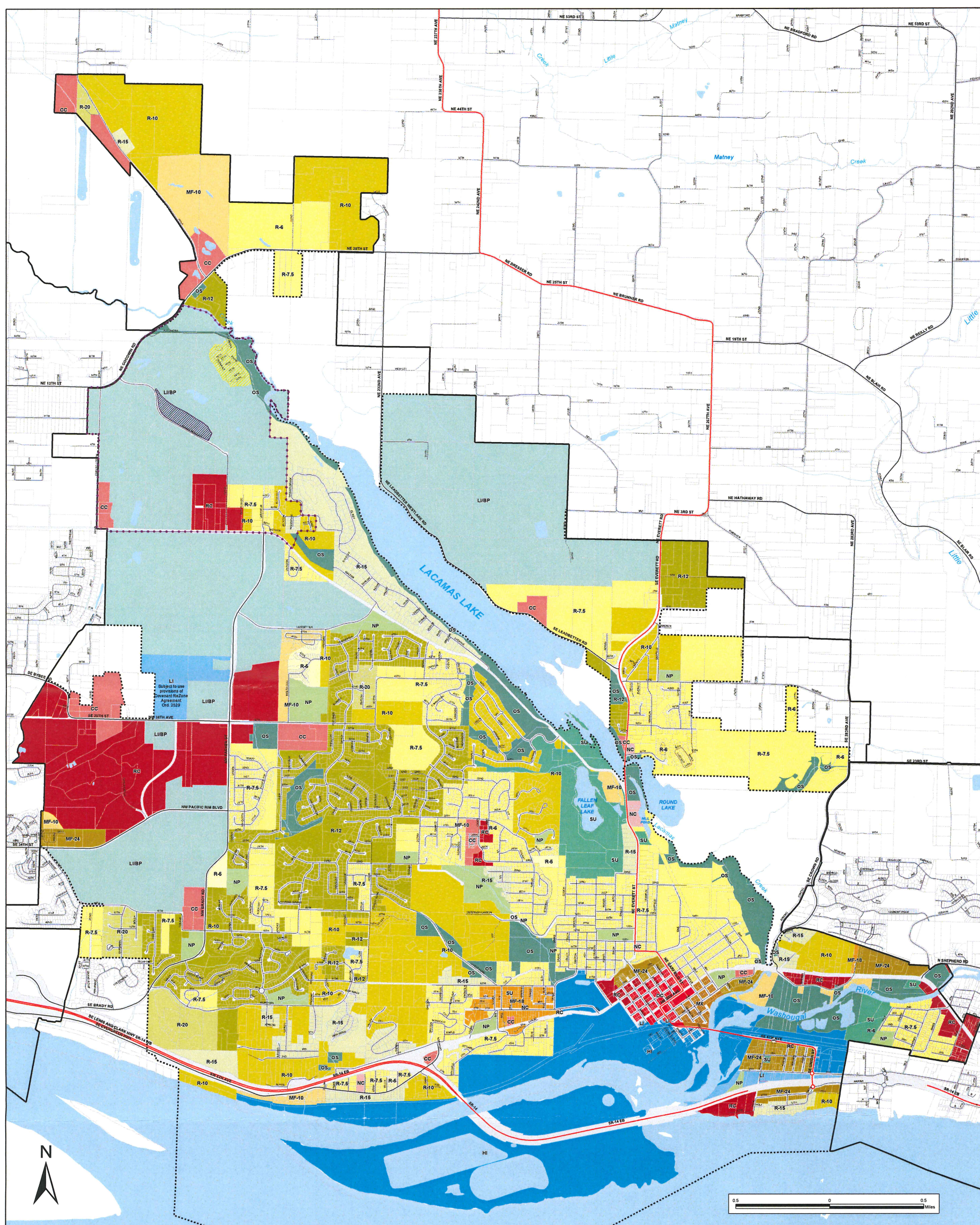
Mayor

ATTEST: _____

Clerk

APPROVED as to form:

Shelley May
City Attorney




Zoning	Multi Family	Industrial	Overlay Districts
Residential	MF-10	HI	Planned Industrial Development Overlay
R-20	MF-18	LI	North Dwyer Creek Employment Mixed Use
R-15	MF-24	Light Industrial / Business Park	North Dwyer Creek Residential Mixed Use
R-12		LI/BP	City Limits
R-10	Commercial	Parks	Urban Growth Boundary (UGA)
R-7.5	RC	NP	
R-6	CC	SU	
R-5	NC	OS	
	DC		
	MX		

CAMAS ZONING MAP



Note: Information on this map was collected from several sources. The City of Camas expressly disclaims liability for any inaccuracies that may be present. Users of this information should themselves check any details for accuracies.

 Clark County, Washington
Geographic Information Systems

Date: 12/4/2014
Path: Q:\Projects\GIS\Other Agencies\19802\LandUse\LandUse.mxd