

Notice of Application and Public Hearing

Knight's Court Subdivision

(File #SUB11-03 and Amended SEPA)

(Prior Permits: File #SPRV06-02, DR06-01 and SEPA)

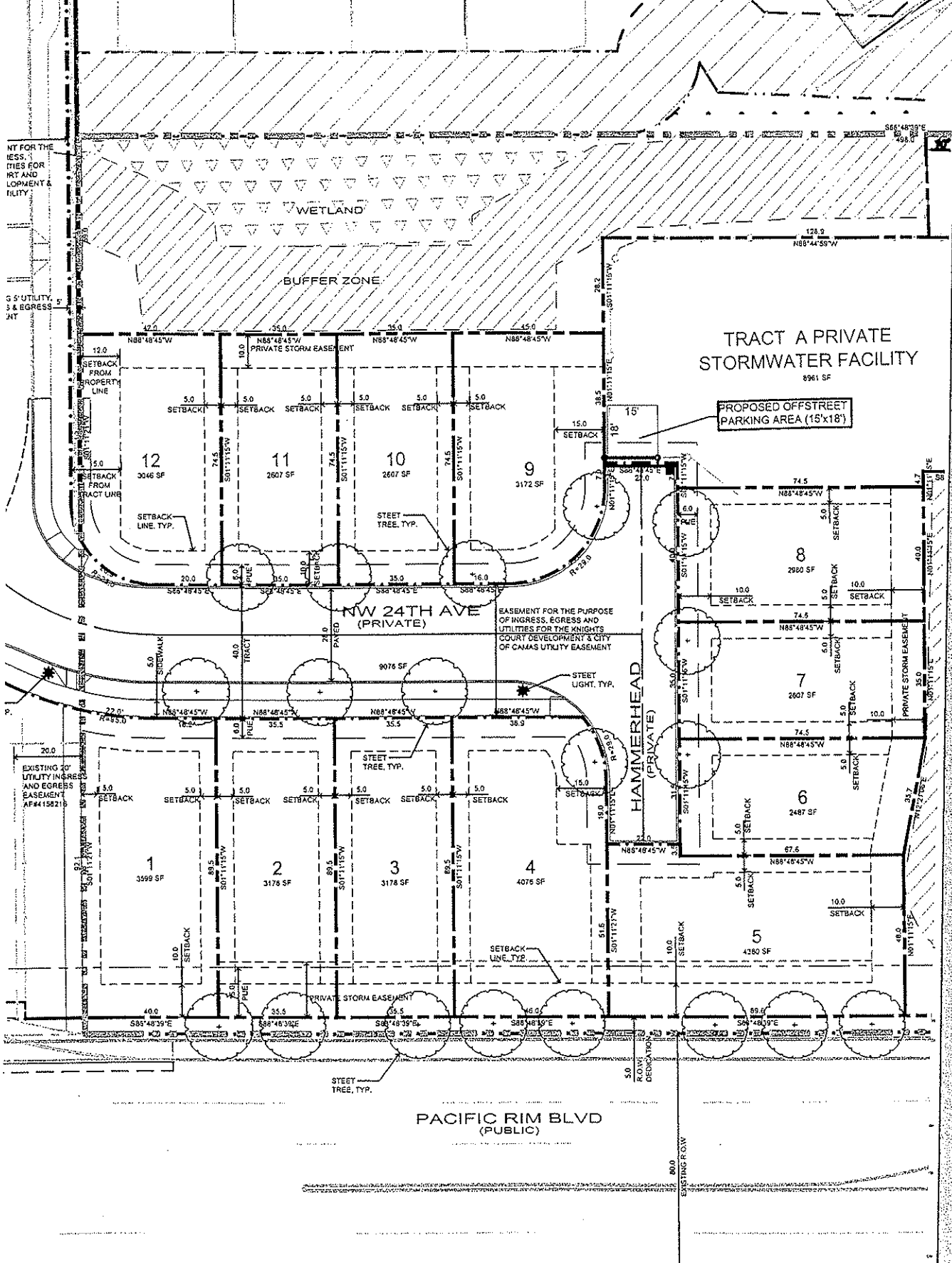
NOTICE IS HEREBY GIVEN that an application for "Knight's Court" a 12-lot preliminary subdivision project was received on December 1, 2011. The applicant is requesting preliminary subdivision approval. The 3.06 acre site is located on NW Pacific Rim Blvd. with site access via Stoneleaf Subdivision in Camas, Washington. Tax parcel # 126047-000 is zoned Multifamily 24 (MF-24). The parcel is located on SW ¼ of Section 5, Township 1 North, Range 3 East of the Willamette Meridian (EWM).

SCHEDULED PUBLIC HEARING: The Knights Court Subdivision (#SUB11-03) will be considered at a public hearing on **May 29, 2012, at 4:00 p.m.**, before the Hearings Examiner in the City Council Chambers, 616 NE 4th Avenue, Camas, WA.

APPLICATION MATERIALS: The application was deemed technically complete on April 23, 2012. The application included the following materials: project narrative; Existing Conditions Plan; Preliminary Subdivision Plat; Utility and Grading Plan; State Environmental Policy Act (SEPA) Checklist and Determination; Traffic Study¹; Geotechnical Study¹; Wetland Study¹; Preliminary Stormwater Plan and Report¹; and a current mailing list. These documents are available for viewing at the Community Development Department during regular business hours.

COMMENT: Any interested party may comment on this application either in person at the hearing, or by submitting written comments, or by contacting Sarah Fox at (360) 817-1562 extension 4269. Written comments that are not submitted in person at the public hearing must be received by the City Clerk at 616 NE Fourth Avenue, Camas, WA 98607, prior to 3:00 p.m., on May 29, 2012, to be included in the record.

¹ These studies and SEPA documents were all a part of the application materials for The Knights Court Condominiums (file #SPRV06-02) as approved in 2006.



DATE	REVISIONS

JOB NO.: GLV001
 DATE: 3.19.2012
 SCALE: 1"=20'
 APPLICATION: SUBDIVISION

KNIGHT'S COURT

PRELIMINARY PLAT